

SERIE

SPIDER 27.14

SELF-PROPELLED AERIAL WORK PLATFORMS

The most reliable, compact and flexible in use.

- Only 88cm (35 inches) wide to go throughout a single door.
- Automatic stabilization
- Automatic storage device
- Fast to be operated in multifunctions.

SIMPLIFIED MAINTENANCE

- Easy access to any maintenance compartment.
- On-board diagnostics
- Tele assistance on demand



PLA/TFORM

B A S K E T

BEST PERFORMANCES

1. Dual sigma type riser, with teleboom and articulated flying jib

- 10m 'Up & Over' working.
- Easy lift of the basket keeping a constant distance from the wall
- Unrestricted 27m working height



2. Enjoy the experience of easy controls

- Proportional, smooth and precise movements.
- Automatic & proportional side outreach that allows the users to enjoy the sensation of stability, reliability and full control of the spider
- Radio remote control, with a selector fast/slow for the drive, automatic recovery button, standard automatic stabilization and self-diagnostic. The system is supplied with a spare cable



3. Attention to the details

- Compact design & highest quality components – strong & reliable
- Air & Water & 220/110 Vac outlets into the basket.
- Cranked outrigger design for increased ground clearance
- Fully protected by metal shields.



4. Multi-width stabilizers setting.

- Asymmetric stability system to enable a free positioning of the legs independently and monitoring the side outreach.
- 400 deg of rotation angle available with 230kg into the basket.



5. Automatic & Proportional Outreach side Control

- The safety system automatically reduce the outreach by monitoring always the weight into the basket.
- The automatic outreach allows to operate up to the maximum height with 230 kg lifting capacity.



6. Remote diagnostics and fleet management (Option)

- The remote diagnostics helps offering a range of unique benefits, including immediate communication of actionable information so you can make decisions in real-time.
- Proactive diagnostic and repair planning assistance with detailed analysis of critical fault codes, and update of the software.
- In addition the GPS locator allows you to know exactly where the spider is.



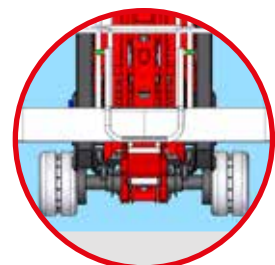
7. Quick detach and interchangeable cage

- Aluminium basket 1,8m wide, easily detachable.
- Basket rotation 90°+90° deg
- Electric system to check whether the basket is properly fitted, enabling the lifting movements. (new EU standards)

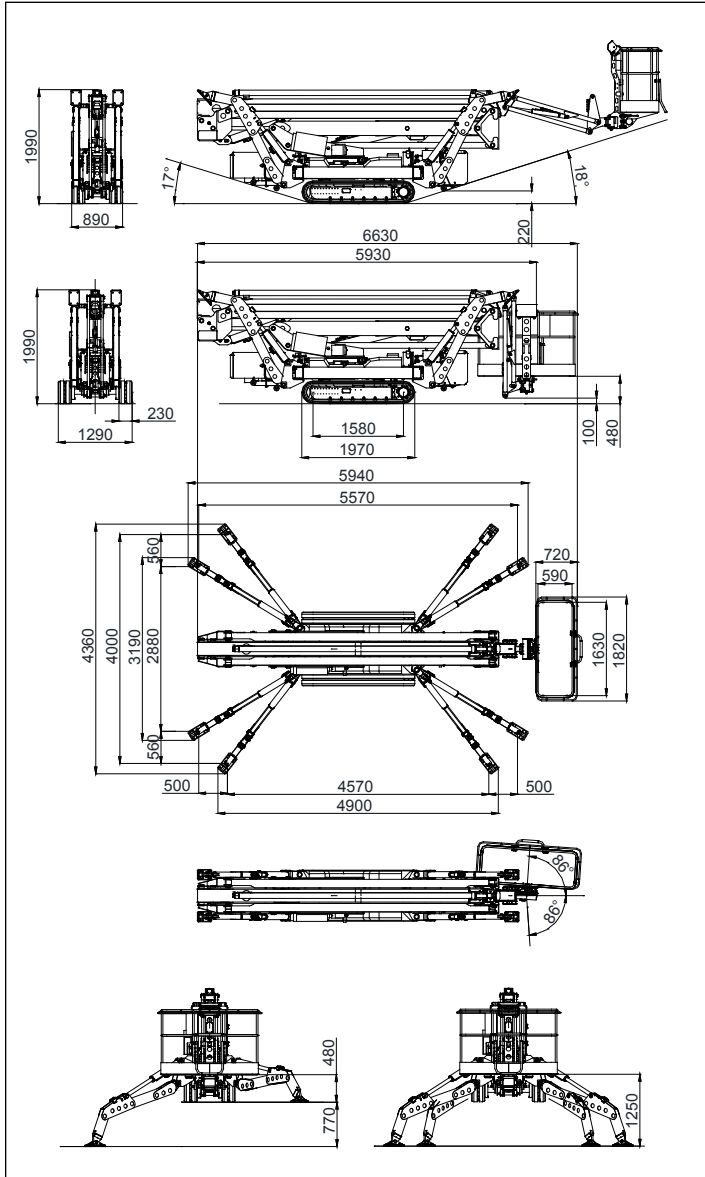


8. Hydraulic track widening system

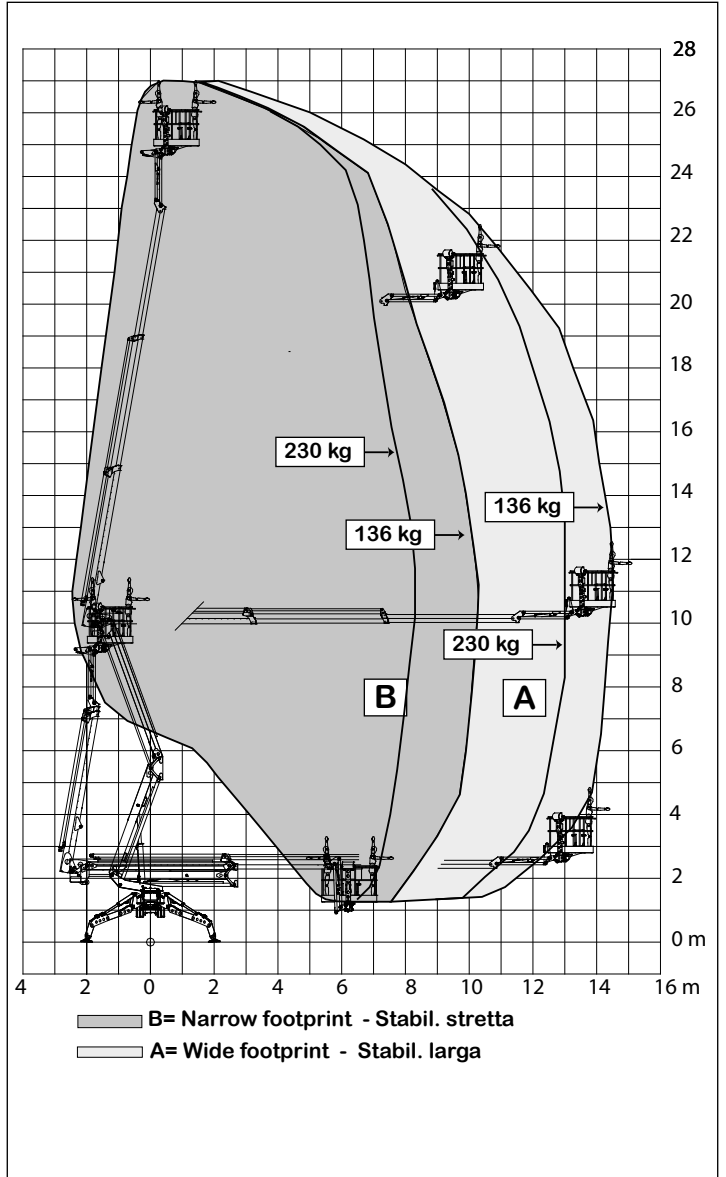
- Wide tracks 1290 mm for extremely stability while driven.
- Excellent versatility on narrow doorway passages, with 880mm only when tracks are in narrow set-up.
- Two speed tracking up to 2,00 Km/h.
- two speed track ideal for better mobility when battery powered



OVERALL DIMENSIONS



WORKING ENVELOPE



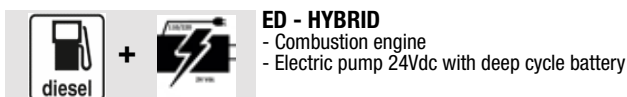
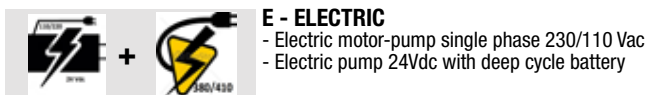
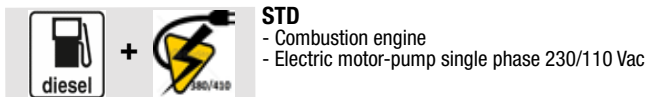
OPERATIONS



SERIE SPIDER 27.14

| TECHNICAL DATA | | VERSION | | |
|--|-------------------|--------------------|--------|---------|
| | | STD | E | ED |
| Max working height | m | 27,01 | | |
| Max height basket floor | m | 25,01 | | |
| Max side outreach | m | 15,11 | | |
| Rotation angle | ° | 360 | | |
| Basket size (standard version) | m | 1,80 X 0,80 | | |
| Basket rotation angle | ° | 86+86 | | |
| Max basket capacity (2 men) | Kg | 230 | | |
| Length in stowed position (with detached basket) | m | 6,71 | | |
| | m | 5,93 | | |
| Min width in stowed position | m | 0,89 | | |
| Min height in stowed position | m | 1,99 | | |
| Stabilization foot-print | m | wide 4,00 x 4,57 | | |
| | m | narrow 2,88 x 5,57 | | |
| Max gradeability | deg/% | 17 (31%) | | |
| Max side gradeability | deg/% | 17 (31%) | | |
| Max speed | Km/h | 2,0 | 1,2 | 2,0 |
| WEIGHTS | | STD | E | ED |
| Weight in working config.* | Kg | 5000* | 5120* | 5200* |
| Ground pressure stowed machine (narrow tracking) | KN/m ² | 5,11 | 5,42 | 5,42 |
| Ground pressure when on stabilizers. | KN/m ² | 2,68 | 2,84 | 2,84 |
| Max point load per outrigger plate | KN | 31,9 | 33,8* | 33,8* |
| POWER | | STD | E | ED |
| Engine D902 Kubota diesel | hp/rpm | 22/3600 | - | 22/3600 |
| Electric motor 230Vac | hp/Volt | 3/230 | 3/230 | - |
| Electric motor 24Vdc | hp/Volt | - | 7,4/24 | 7,4/24 |
| Battery capacity 24Vdc lithium-ion | Ah | - | 400 | 400 |
| Battery charger - Lithium-ion | Ah | - | 100/50 | 100/50 |

* Some weights may differ due to the chosen optionals.



| STANDARD EQUIPMENTS | VERSION | | |
|--|---------|-----|-----|
| | STD | E | ED |
| Dual sigma type riser, with teleboom and articulated flying jib. | | • | |
| Radio remote control for drive & stab with diagnostic (supplied with emergency wire) | | • | |
| Hydraulically extending under carriage | | • | |
| Double proportional drive speed (slow/fast) | | • | |
| Triple stabilization set-up and automatic monitoring device with no rotation restrictions. | | • | |
| Auto-stabilization by radio remote control. | | • | |
| Automatic recovering push button on-board. | | • | |
| Light alloy basket, easily detachable | | • | |
| Spare radio remote control batteries (2 supplied with charger included) | | • | |
| Protected against falling objects by strong metal covers. | | • | |
| Pipes & cables fully protected inside the booms. | | • | |
| Electric outlets available into the basket 230/110Vac | | • | |
| Air & water outlets into the basket (high pressure) | | • | |
| Diesel KUBOTA water cooled engine. | • | --- | • |
| Electric-pump 380Vac/3ph/15hp for indoor use | • | • | - |
| Deep-cycle batteries 24Vdc/420Ah, electric power-pack for indoor use. | --- | • | • |
| Battery charger 24Vdc with power selector. | --- | • | • |
| Phase inverter and electronic alert device. | • | • | --- |
| EXTRAS - ON DEMAND | | | |
| Non-marking tracks for delicate surfaces | | • | |
| Electric emergency descent kit 24Vdc | • | --- | --- |
| Wind gauge to monitor max wind speed | | • | |
| Basket working light | | • | |
| Remote diagnostics and fleet-management | | • | |
| Arctic lubricants for low temperature usage | • | --- | • |
| Over-sized nylon plates and recovering frame | | • | |
| Alu detachable basket 1,80x0,80m wide | | • | |
| Alu detachable basket 2,20x0,80m wide | | • | |
| INTERCOM device from basket to ground. | | • | |
| Lithium-ion battery pack for longer working cycle | --- | • | • |
| APPROVALS | | | |
| Europe EN280 - Canada: CS-B354 - Australia: AS14.18 | | | |



PLATFORM BASKET

PLATFORM BASKET
 Via Montessori, 1 - 42028 Poggio - RE - Italy
 Tel. +39 0522 967666 - Fax +39 0522 967667
 info@platformbasket.com

