

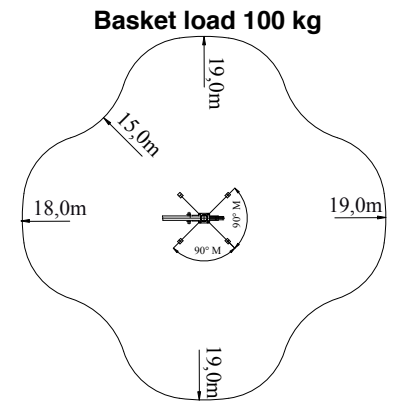
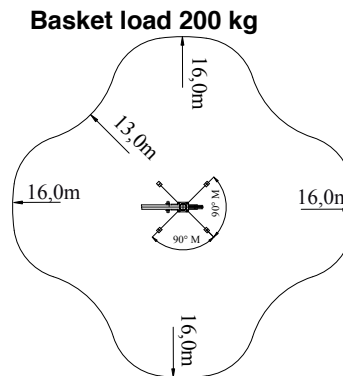
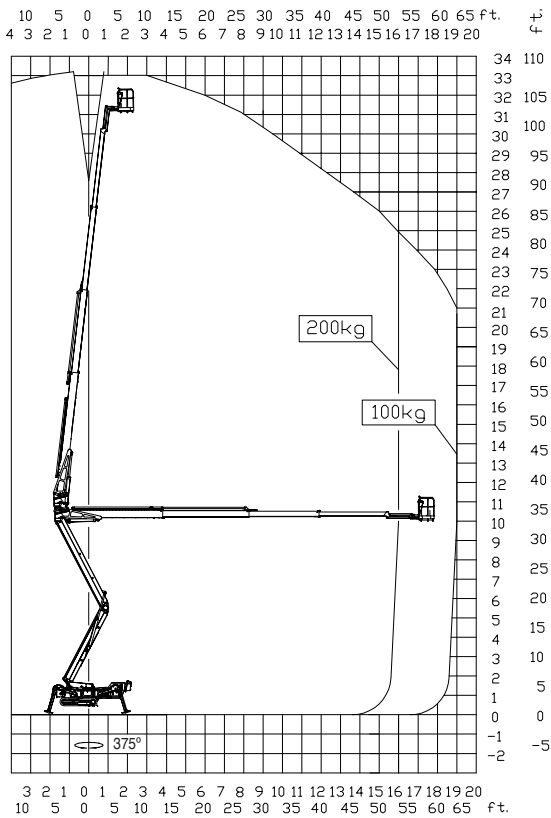


FS330Z Vario FALCON

Model:	FS330Z Vario
Working height:	33 m
Maximum reach:	15 m - 19 m
Jib arm:	110°
Basket load:	200 kg
Aluminium basket:	(0,8 x 1,4 m)
Basket rotation:	+/- 90°
Turret rotation:	375°
Dimensions (transport position)	
Total height:	1,99 - 2,25 m
Total length:	7,30 m
Total width (min):	1,25 - 1,58 m
Gradability (standard):	20°/37%
Weight approx.:	6.450 kg



FS330Z Vario



All measurements in meters

Standard equipment:

- Automatic stability & outreach control
- Computer controlled (can-bus)
- Proportional control of functions
- Self-propelled 2 speed selection
- Battery powered with charger 360Ah
- Jib-arm 110°
- 375° turret rotation with integrated stop
- +/-90° basket rotation
- Electronic checking of power system (PLC)
- Manual pump system for emergency lowering
- Ability to self-load onto trucks and trailers
- Variable width, hydraulic (1,25m - 1,58m)
- Minimum width only 1,25m
- Space for tools, etc. in basket
- Storage room in chassis with key lock
- Diesel engine, Kubota 3 cyl. 21,7 kW
- Wireless remote control of all functions
- 110V/220V AC power supply in the basket
- Non marking crawlers
- Individual setting of each outrigger
- Slope alarm
- Falcon Service Tool (Remote access via laptop)

Options:

- Hazard lights kit (strobe lights, working lamp)
- Protection kit (enhanced shields/covers)
- 400V AC direct powered electro motor
- Autosetting / levelling
- Special outrigger footplates
- Special colour
- Dual charging power 110V and 220V
- Anti entrapment device
- GSM module for remote access and monitoring