

SERIE

# SPIDER 27.14

SELF-PROPELLED AERIAL WORK PLATFORMS

**The most reliable, compact and flexible in use.**

- Only 88cm (35 inches) wide to go throughout a single door.
- Automatic stabilization
- Automatic storage device
- Fast to be operated in multifunctions.

**SIMPLIFIED MAINTENANCE**

- Easy access to any maintenance compartment.
- On-board diagnostics
- Tele assistance on demand



# PLA/TFORM

B A S K E T

## BEST PERFORMANCES

### 1. Dual sigma type riser, with teleboom and articulated flying jib

- 10m 'Up & Over' working.
- Easy lift of the basket keeping a constant distance from the wall
- Unrestricted 27m working height



### 2. Enjoy the experience of easy controls

- Proportional, smooth and precise movements.
- Automatic & proportional side outreach that allows the users to enjoy the sensation of stability, reliability and full control of the spider
- Radio remote control, with a selector fast/slow for the drive, automatic recovery button, standard automatic stabilization and self-diagnostic. The system is supplied with a spare cable



### 3. Attention to the details

- Compact design & highest quality components – strong & reliable
- Air & Water & 220/110 Vac outlets into the basket.
- Cranked outrigger design for increased ground clearance
- Fully protected by metal shields.



### 4. Multi-width stabilizers setting.

- Asymmetric stability system to enable a free positioning of the legs independently and monitoring the side outreach.
- 400 deg of rotation angle available with 230kg into the basket.



### 5. Automatic & Proportional Outreach side Control

- The safety system automatically reduce the outreach by monitoring always the weight into the basket.
- The automatic outreach allows to operate up to the maximum height with 230 kg lifting capacity.



### 6. Remote diagnostics and fleet management (Option)

- The remote diagnostics helps offering a range of unique benefits, including immediate communication of actionable information so you can make decisions in real-time.
- Proactive diagnostic and repair planning assistance with detailed analysis of critical fault codes, and update of the software.
- In addition the GPS locator allows you to know exactly where the spider is.



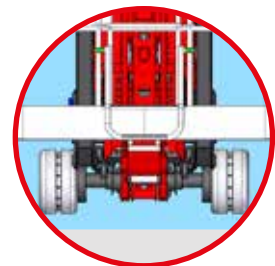
### 7. Quick detach and interchangeable cage

- Aluminium basket 1,8m wide, easily detachable.
- Basket rotation 90°+90° deg
- Electric system to check whether the basket is properly fitted, enabling the lifting movements. (new EU standards)

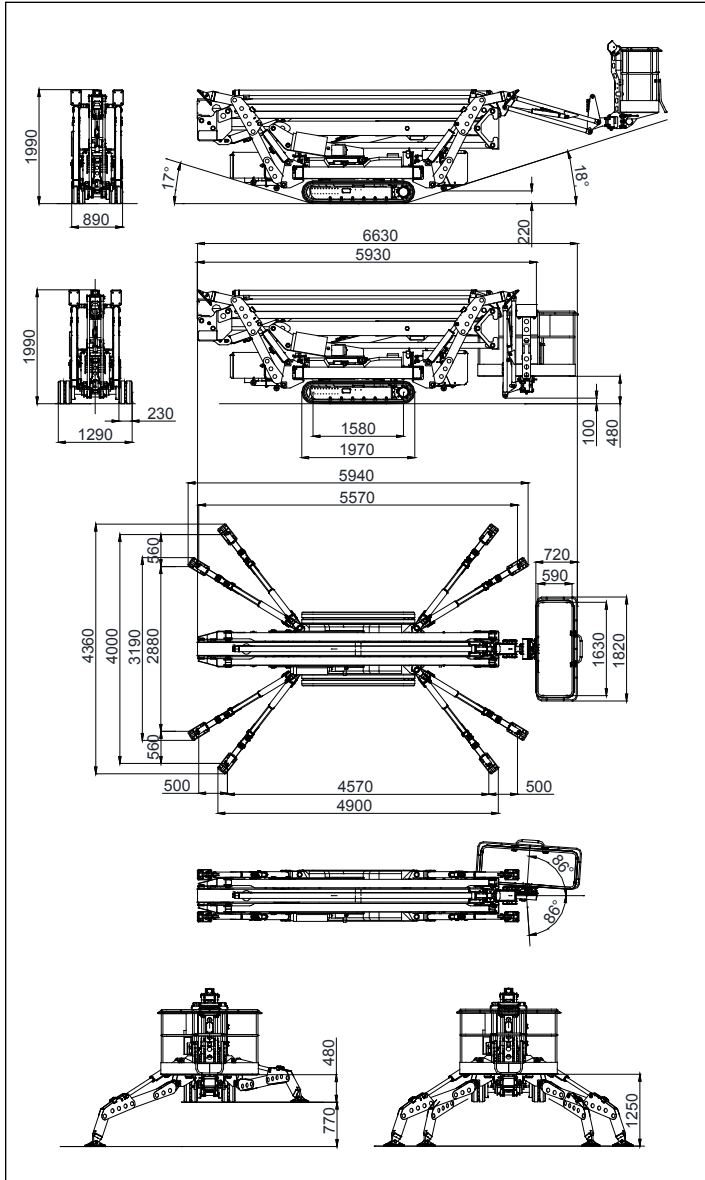


### 8. Hydraulic track widening system

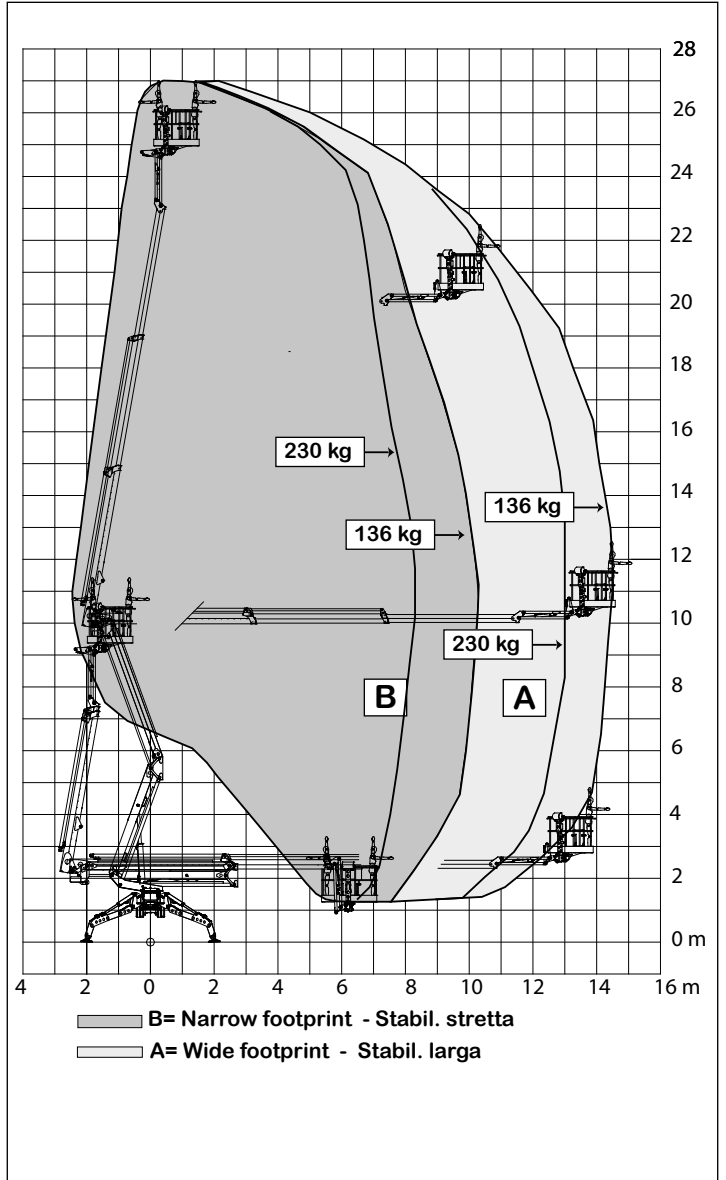
- Wide tracks 1290 mm for extremely stability while driven.
- Excellent versatility on narrow doorway passages, with 880mm only when tracks are in narrow set-up.
- Two speed tracking up to 2,00 Km/h.
- two speed track ideal for better mobility when battery powered



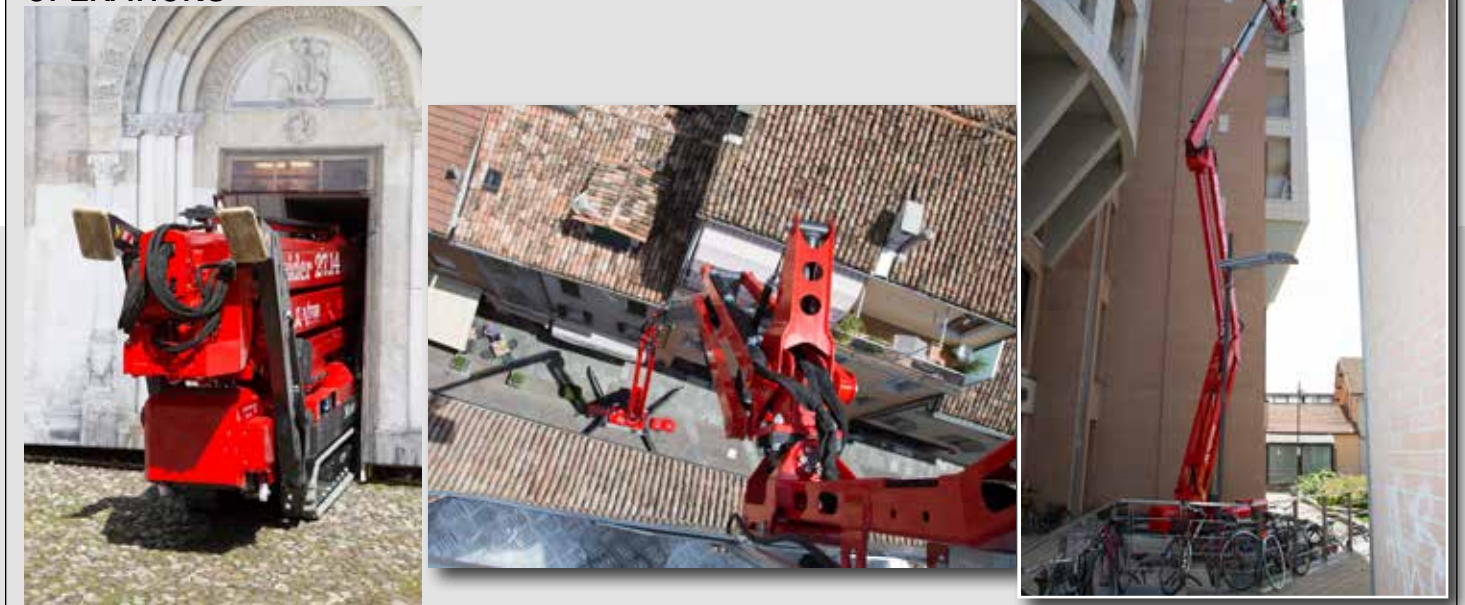
## OVERALL DIMENSIONS



## WORKING ENVELOPE









## OPERATIONS



# SERIE SPIDER 27.14

TECHNICAL DATA		VERSION		
		STD	E	ED
Max working height	m	27,01		
Max height basket floor	m	25,01		
Max side outreach	m	15,11		
Rotation angle	°	360		
Basket size (standard version)	m	1,80 X 0,80		
Basket rotation angle	°	86+86		
Max basket capacity (2 men)	Kg	230		
Length in stowed position (with detached basket)	m	6,71		
	m	5,93		
Min width in stowed position	m	0,89		
Min height in stowed position	m	1,99		
Stabilization foot-print	m	wide 4,00 x 4,57		
	m	narrow 2,88 x 5,57		
Max gradeability	deg/%	17 (31%)		
Max side gradeability	deg/%	17 (31%)		
Max speed	Km/h	2,0	1,2	2,0
WEIGHTS		STD	E	ED
Weight in working config.*	Kg	5000*	5120*	5200*
Ground pressure stowed machine (narrow tracking)	KN/m <sup>2</sup>	5,11	5,42	5,42
Ground pressure when on stabilizers.	KN/m <sup>2</sup>	2,68	2,84	2,84
Max point load per outrigger plate	KN	31,9	33,8*	33,8*
POWER		STD	E	ED
Engine D902 Kubota diesel	hp/rpm	22/3600	-	22/3600
Electric motor 230Vac	hp/Volt	3/230	3/230	-
Electric motor 24Vdc	hp/Volt	-	7,4/24	7,4/24
Battery capacity 24Vdc lithium-ion	Ah	-	400	400
Battery charger - Lithium-ion	Ah	-	100/50	100/50

\* Some weights may differ due to the chosen optionals.

	+		<b>STD</b> - Combustion engine - Electric motor-pump single phase 230/110 Vac
	+		<b>E - ELECTRIC</b> - Electric motor-pump single phase 230/110 Vac - Electric pump 24Vdc with deep cycle battery
	+		<b>ED - HYBRID</b> - Combustion engine - Electric pump 24Vdc with deep cycle battery

STANDARD EQUIPMENTS	VERSION		
	STD	E	ED
Dual sigma type riser, with teleboom and articulated flying jib.		•	
Radio remote control for drive & stab with diagnostic (supplied with emergency wire)		•	
Hydraulically extending under carriage		•	
Double proportional drive speed (slow/fast)		•	
Triple stabilization set-up and automatic monitoring device with no rotation restrictions.		•	
Auto-stabilization by radio remote control.		•	
Automatic recovering push button on-board.		•	
Light alloy basket, easily detachable		•	
Spare radio remote control batteries (2 supplied with charger included)		•	
Protected against falling objects by strong metal covers.		•	
Pipes & cables fully protected inside the booms.		•	
Electric outlets available into the basket 230/110Vac		•	
Air & water outlets into the basket (high pressure)		•	
Diesel KUBOTA water cooled engine.	•	---	•
Electric-pump 380Vac/3ph/15hp for indoor use	•	•	-
Deep-cycle batteries 24Vdc/420Ah, electric power-pack for indoor use.	---	•	•
Battery charger 24Vdc with power selector.	---	•	•
Phase inverter and electronic alert device.	•	•	---
EXTRAS - ON DEMAND			
Non-marking tracks for delicate surfaces		•	
Electric emergency descent kit 24Vdc	•	---	---
Wind gauge to monitor max wind speed		•	
Basket working light		•	
Remote diagnostics and fleet-management		•	
Arctic lubricants for low temperature usage	•	---	•
Over-sized nylon plates and recovering frame		•	
Alu detachable basket 1,80x0,80m wide		•	
Alu detachable basket 2,20x0,80m wide		•	
INTERCOM device from basket to ground.		•	
Lithium-ion battery pack for longer working cycle	---	•	•
APPROVALS			
Europe EN280 - Canada: CS-B354 - Australia: AS14.18			



## PLATFORM BASKET



PLATFORM BASKET  
Via Montessori, 1 - 42028 Poggio - RE - Italy  
Tel. +39 0522 967666 - Fax +39 0522 967667  
info@platformbasket.com